

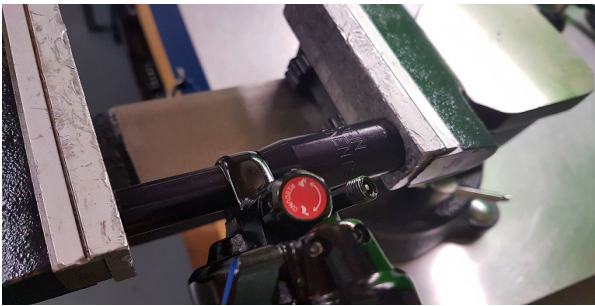
Profin DU Bush Tool Instructions -for use with all 1/2" 1/2" Shocks.

Step 1



Remove shock mounting from the bushing then place the stepped part of the bushing tool through the eyelet.

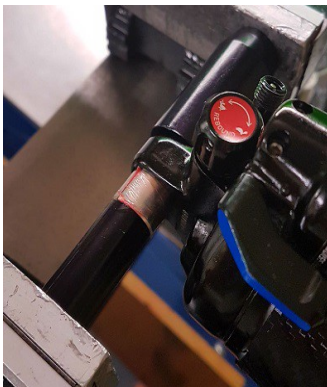
Step 2



Place the tapered part of the busing tool on the opposite side and carefully place the tool within the vice ensuring the tool is seated squarely.

If you have aluminium vice/soft jaws it is recommended that you use them however if not the tool can be used without during removal.

Step 3



If your replacement bushing is metal rather than a polymer then grease the bushing lightly. Polymer bushings should not be greased. Now with the tapered end facing outwards slowly and gently tighten your vice until it comes to a stop.

Once the vice does stop you do not need to tighten it any further, your replacement bushing will be seated perfectly central. If you continue to tighten the vice with excessive force you can damage the tool and the bushing.



If you are not using aluminium soft jaws place the polymer cap over the tapered end of the tool where it would come into contact with the vice as shown.

Failure to use the polymer cap or soft jaws when fitting a new bush can result in damage to the tool.